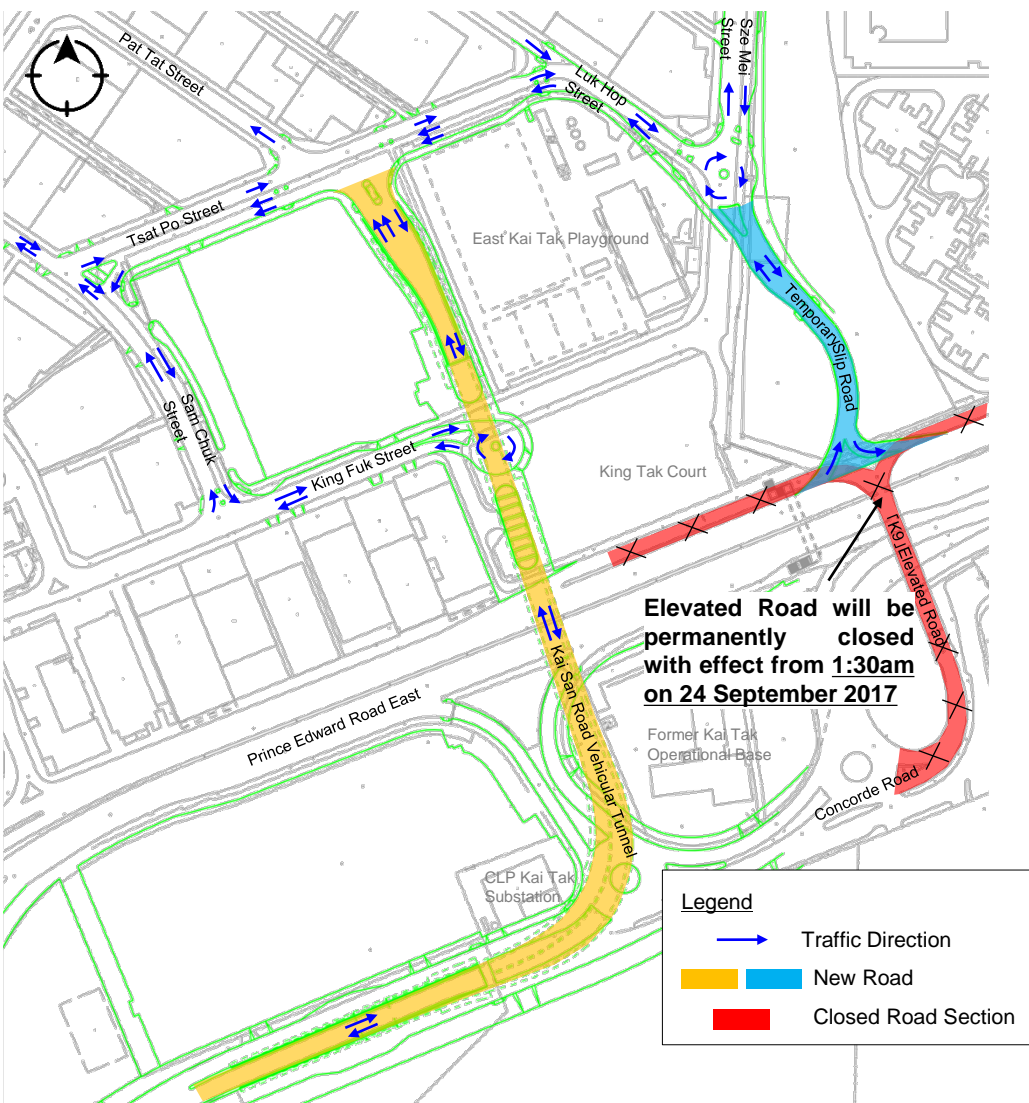


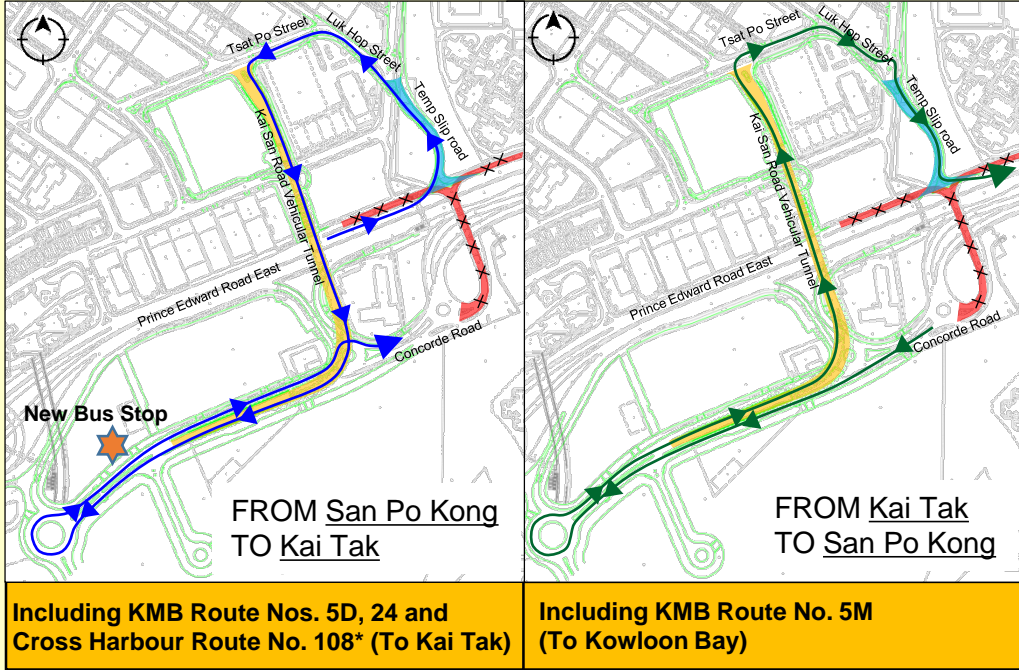
**Kai Tak Development
 Stage 3B Infrastructure Works at Former North Apron Area
 New Traffic and Public Transport Arrangement
 For San Po Kong and Kai Tak Area**



With effect from **1:30am on 24 September 2017**, the **elevated road [K9]** connecting Prince Edward Road East (eastbound) and Concorde Road will be **permanently closed** to all vehicular traffic.

In connection with the above road closure, the following traffic and transport arrangements will be implemented:

Traffic and Public Transport Arrangement (including KMB Route Nos. 5D, 5M, 24 and Cross Harbour Route No. 108)



Existing bus stops of KMB Route Nos. 5D, 5M, 24 and Cross Harbour Route No. 108 would not be affected.

Appropriate traffic signs will be erected on site to guide motorists. Public transport operators will display notices to advise passengers of the above arrangements.

*** Cross Harbour Route No. 108 will be diverted from their first departure on 17 September 2017.**